

## 7/8" Furring "Hat" Channel

### Product Application:

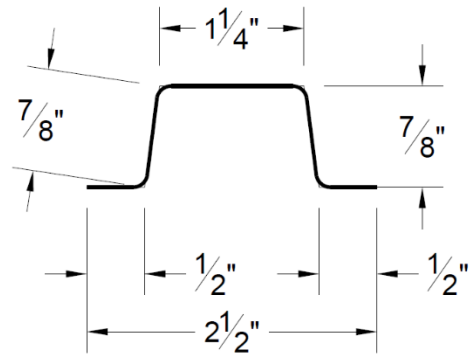
Super Stud Building Products Furring Channel (often called hat channel) provides support for sheathing, siding, and decking products in the construction of soffits, ceilings, roofs, and walls. Furring Channel is compatible for use over a number of different support members.

Available in 7/8", 1 1/2", and custom depths (see separate submittal for 1 1/2")  
Standard lengths are 8, 9, 10, and 12 feet.  
Shipped in bundles of ten pieces.

18 mil (25 Gauge) hemmed leg furring channel is available in the submittal builder under a separate submittal sheet.

### Product Attributes:

- Super Stud Building Products Inc. manufactures nonstructural steel framing members, components, and accessories in compliance with American Iron & Steel Institute (AISI) and ASTM standards A653, C645.
- Galvanized sheet steel meets requirements of ASTM A924 and A1003: G40 standard for 25 and 20 gauge; G60 available for 20 gauge. G60 standard for 18 and 16 gauge; G90 available for 18 and 16 gauge.
- Complete installation info is available in ASTM C754



*Note: all dimensions are plus or minus 1/8 inch*

### Section Properties: 7/8" Furring Channel

									Effective Properties			
Gauge	Design thickness (in)	Fy (ksi)	Depth (in)	A (in <sup>2</sup> )	Ix (in <sup>4</sup> )	rx (in)	Iy (in <sup>4</sup> )	ry (in)	Ixd (in <sup>4</sup> )	Sxe (in <sup>3</sup> )	Ma (in-kips)	Va (kips)
20	0.0312	33	0.875	0.143	0.018	0.351	0.077	0.734	0.018	0.038	0.758	0.446
18	0.0451	33	0.875	0.184	0.022	0.347	0.097	0.727	0.022	0.048	0.954	0.572
16	0.0566	50	0.875	0.229	0.027	0.342	0.119	0.723	0.027	0.058	1.745	1.066